

F.A. Challenge Cup Winners:

1883-84, 1884-85, 1885-86,
1889-90, 1890-91, 1927-28.

League Champions:

1911-12, 1913-14.

Division 2 Champions:

1938-39.

Central League Champions:

1964-65, 1966-67.



BLACKBURN ROVERS F.C.

Directors :

A. L. Fryars (Chairman), W. H. Bancroft (vice-chairman), C. R. Davies, G. N. Forbes, W. I. Hubert, D. Hull, E. Pickering.

Vice-president : J. Wilkinson.

Secretary : D. Grimshaw.

Team Manager : E. Quigley.

Admin. Manager : J. Carey.

**Saturday,
September 5th
SWINDON T.**

season 1970 / 71

official programme

1/-
5p


The Best Place for
FURNITURE
and **CARPET**
requirement

EDMONDSON'S

DARWEN STREET - BLACKBURN

Telephone: 55551



THE MAN
STANDING
NEXT TO YOU
COULD JUST
HAVE WON
CROSS
THE
BALL 
COULD YOU?

SMALL FORTUNES CAN BE
WON EVERY WEEK IN
THE LANCASHIRE
EVENING TELEGRAPH

£250
BONUS
IN LAST
SPORTS

F.A. DIARY 1970-71

Now available, price 6s.

Apply direct to Football Association,

22 Lancaster Gate, London, W2.



TEAM MANAGER'S NOTES

BY EDDIE QUIGLEY

THOUGH we won a welcome point at Hillsborough last Saturday—and justice would only have been served had we won for the first time for 40 years at this ground—we paid a heavy price for it.

We shall have to face the fact that Don Martin is likely to be out of action for some considerable time as a result of his serious ankle injury, and this is a big loss to us.

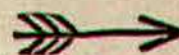
Don is a very popular player with the supporters because he gives all he has got in every match. He was playing with great skill and determination when he got the injury and it seemed that the heavy pressure we were exerting on Sheffield Wednesday would have told its tale. But when Don was carried off with ten minutes to go we were reduced to ten men, because we had to bring off Stuart Metcalfe with an ankle injury after 18 minutes and used our substitute, Ray Charter, to take his place.

In the circumstances, a point was a good result.

I am pleased to state that Ken Waterhouse has been appointed our new chief trainer-coach in succession to Brian Birch. Ken has done a great job as assistant trainer-coach since he joined us from Morecambe, where he was manager. We wish him all the best in his new appointment.

Copies of all records played over the loudspeaker can be obtained at Reidy's Music Shop, Penny Street, Blackburn.

THE LADS IN BLUE and WHITE



A SPECIAL picture, taken before the start of the season, shows the Rovers' senior staff.

Pictured, left to right, are: Back row—Dewi Atherton, Terry Eccles, Roger Jones, John Barton, Allan Hunter, Jimmy Kerr; Next to back row—Ken Waterhouse (now chief trainer-coach), Billy Wilson, Dick Mulvaney, George Sharples, Bryan Conlon, Don Martin, Brian Birch (former chief trainer-coach, now in Turkey); Next to front row—Fred Goodwin, Frank Kopel, Eamonn Rogers, Ken Knighton, Stuart Metcalfe, Alex Russell, Brian Hill; Front row—Mick Wood, Ray Charter, Derek Fazackerley, Jeff Whalley, Tony Parkes.

WITH THE JUNIORS

Lancashire League—Division 2

ROVERS "B" 4, BOLTON WANDERERS "B" 2

ROVERS "B": Moseley; Rosindale, Hallahan; Haworth, Sneath, Martin; Macdonald, Lowe, Lukes, Hutchinson, McCrea.
Scorers: Macdonald (2), Lukes, Hutchinson.

— CONSULT —

HARGREAVES

LANCASHIRE

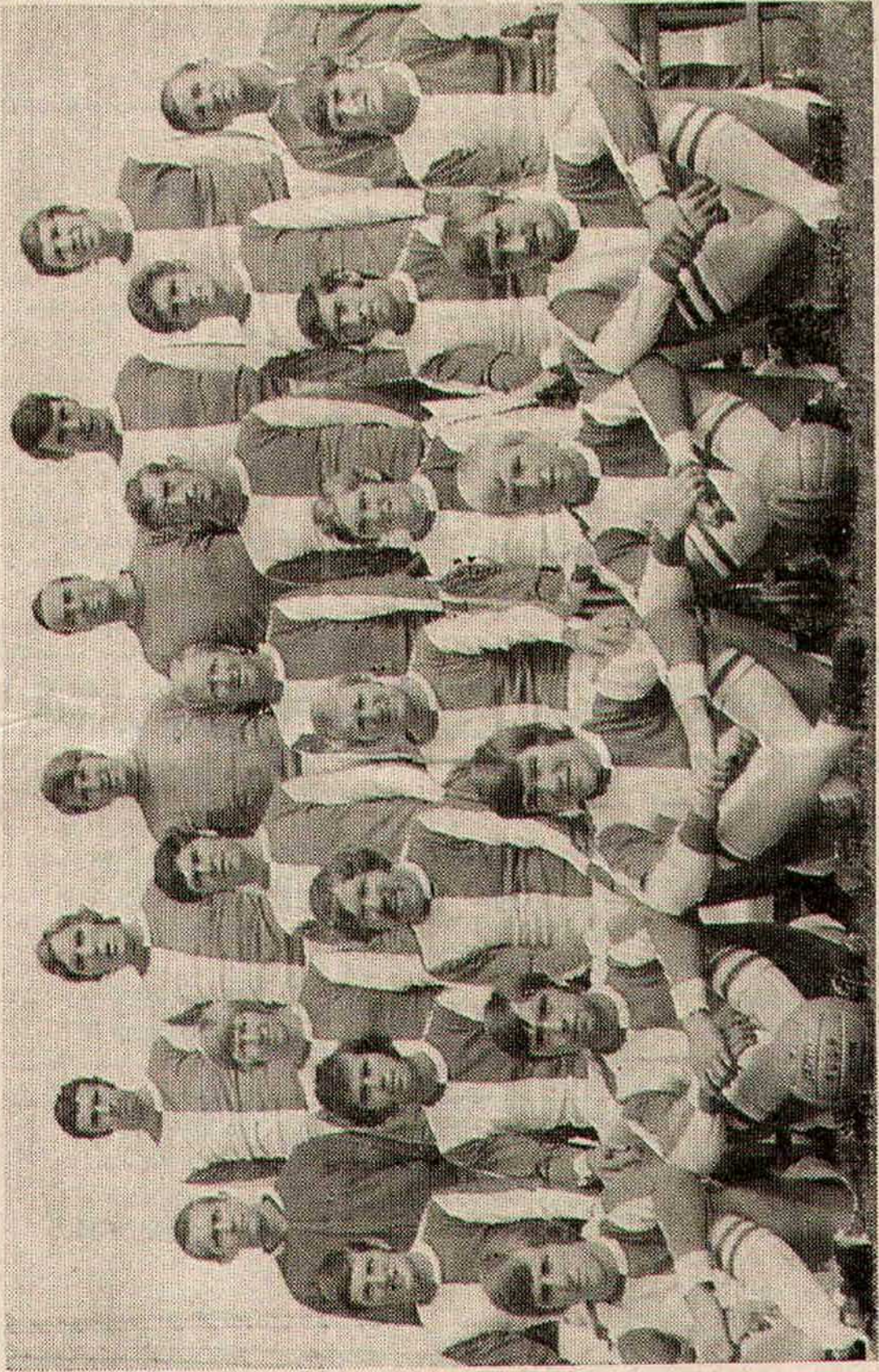
(A branch of the British Fuel Co.)

DISTRIBUTORS OF ALL SOLID FUELS

OUR GOAL QUALITY AND SERVICE

CALL, WRITE OR PHONE 55011

STOUT STREET, WHALLEY BANKS
BLACKBURN



FROM THE RECORD BOOKS

THE Swindon club was formed in 1881 by the Rev. W. Pitt for the young men of his parish. They became a professional club in 1894 and entered the Southern League the same year. They became original members of the League Division Three in 1920.

As long ago as the early 1900's Swindon had one of the most famous players in the history of the game, Harold Fleming, their centre-half, who gained many England caps.

Swindon have twice reached the semi-finals of the FA Cup—in 1910 and 1912—but their crowning achievement without any doubt was the winning of the League Cup as a Third Division side in 1969 when they beat Arsenal in the Final at Wembley.

RIBBLESDALE COACHWAYS LTD.

HEAD OFFICE: George Street West, Blackburn. Telephone: 57311

FOR ALL

FOOTBALL EXCURSIONS

TO ROVERS AWAY GAMES

Please enquire at your local agents

W. TALBOT & SONS LTD.

— PHOTOGRAPHERS —

123, PRESTON NEW ROAD, BLACKBURN Tel. 55040

- **PRESS PUBLICITY**
 - **TELEVISION**
 - **COMMERCIAL**
 - **CINE-FILM**
 - **PORTRAITURE**
 - **WEDDING ALBUMS and**
 - **COLOUR PHOTOGRAPHY**
- OFFICIA PROGRAMME PHOTOGRAPHERS**

LEAGUE APPEARANCES AND GOALS

	1970-71						TOTAL					
	1964-65	1965-66	1966-67	1967-68	1968-69	1969-70	Appearances	Sub	Goals	Appearances	Sub	Goals
Wilson, W. ... (a)	8	33	32	42	40	42	4			201		
Mulvaney, R. ... (a)	7	23	7	6	23	41	4			111		3
Sharples, G. F. V.	5	28	25	22	18					98		4
*Rogers, E. ... (a)		2	5	34	41	35	4		1	122		22
Barton, J. B.			42	13	3	9				67		
Martin, D.				15	38	42	3		1	97		29
Metcalf, S. ... (a)				3	38		2			82		2
Kopel, F.					4	5				9		
Knighton, K.						41	3			44		7
Hunter, A.						37	4			41		
Hill, B.						22	4			26		3
Eccles, T.						4				4		
Jones, R.						5	4			9		
Wood, M.						6	2			7	2	
Goodwin, F.						11	4			15		2
Charter, R.						9	1			10		
Whalley, J.						1				1		
Russell, A.							2			2		
Conlon, B.							4			4		

*—International. (a) Amateur with this Club before signing Professional.

**more
sport
than
ever
before
in your**



BLACKBURN TIMES

SCORE BOARD

DIVISION ONE

DIVISION TWO

A ARSENAL v
SPURS

B BLACKPOOL v
SOUTHAMPTON

C COVENTRY C. v
HUDDERSFIELD T.

D CRYSTAL P. v
NOTTS FOREST

E DERBY C. v
NEWCASTLE U.

F IPSWICH T. v
BURNLEY

G LEEDS U. v
CHELSEA

H LIVERPOOL v
MANCHESTER U.

J MANCHESTER C. v
WEST BROM A.

K WEST HAM U. v
EVERTON

L WOLVES v
STOKE C.

M

A CARDIFF C. v
BIRMINGHAM C.

B CARLISLE U. v
ORIENT

C CHARLTON A. v
MILLWALL

D HULL C. v
BOLTON W.

E LUTON T. v
MIDDLESBROUGH

F OXFORD U. v
LEICESTER C.

G PORTSMOUTH v
SHEFFIELD W.

H Q.P.R. v
WATFORD

J SHEFFIELD U. v
BRISTOL C.

K SUNDERLAND v
NORWICH C.

L

M

WHITBREAD TROPHY



The Best Bitter

Meet the New Boys

No. 3

ALEC RUSSELL



FORMERLY with Everton, Alex joined us from Southport in an exchange deal which took Laurie Calloway to the Haig Avenue club.

Alex is grateful for the chance to get back to the big time, and we feel certain that he will serve us well. He is a very useful player to have around, for he has plenty of experience, particularly as a midfield player.

This afternoon, however, in the emergency created by injuries to Don Martin and Stuart Metcalfe, you see him line-up on the right wing.

Here's wishing Alex a long and happy stay at Ewood Park.

EMPIRE GARAGE (Blackburn) Ltd.

AQUEDUCT ROAD, EWOOD, BLACKBURN

RENAULT AGENTS

Telephone: Blackburn 59521 and 58574

ALWAYS A WINNER — home or away

BENSON'S SUPER CRISPS

THE FAMILY FAVOURITE NOW IN
CHOICE FLAVOURS

6

Plain : Cheese and Onion : Smokey Bacon
Savoury Chicken : Salt and Vinegar : Pickled Onion

BE SURE YOU ASK FOR

BENSON'S

HARWOOD STREET, BLACKBURN—Telephone 53104

★ Collectors' Corner

In each home programme we shall be putting on parade a picture of a star for you to collect.

The second player in what we hope will be a very popular feature for the younger fans is:



No. 2

Jimmy Nicholson

Huddersfield Town

and

Northern Ireland

Making his return to the First Division this season with newly-promoted Huddersfield is Irish international Jimmy Nicholson.

He was formerly with Manchester United and is one of the best post-war buys made by Huddersfield, for whom he has been club captain for several seasons.

Jimmy had led the Yorkshire side astutely and is confident about their ability to stay among the big boys in the first grade.

Many times capped for Ireland, he is a hard-working wing-half with a decided flair for attack.



'EWOOD ERNIES' ROAD ROUTE TO MIDDLESBOROUGH

SATURDAY 12th SEPTEMBER

To Burnley via A676, then take the A56 to Skipton. From here follow the A59 to Harrogate, taking the A61 from Harrogate, first to Ripon, and then to Thirsk, here pick up the A19 to Cleveland, then the A172 to Middlesbrough. Approx. 106 miles (issued by the A.A.) Dine at The Emporium Cafe, Lynthorpe Road, Uptons Fursing Stores, Lynthorpe Road, for first-class grills try The Lord Raglan, Corporation Road.

The Middlesbrough F.C. Social Club is situated on Clyde Road, near Ayresome Park.

For coach booking details see 'Going Away' on Centre Page.

Agents wanted for "Rovers Bingo" and "Match Day Double" Fund Raising Schemes.

**HELP YOUR CLUB!
HELP YOURSELF!
TO**

- ★ Cash discount on all sales
- ★ Bonus prizes
- ★ Free agents monthly draw

Please send "Rovers Promotions" details with
no obligation incurred to

NAME

ADDRESS

Send to "Rovers Promotions" Development
Office, Nuttall Street, Blackburn, BB2 4EJ.

PARK BATTERIES

For Instant Response



For Solid Service

— Contact —

**David Barker
& Son Ltd.**

SOLID FUEL

12 FLEMING SQUARE
BLACKBURN.

Phone: 5994 and 51974

Depots: Blackburn,
and Chorley

TO-DAY'S LIN

BLACKBURN ROVERS
(Blue and White shirts)

- 1 ROGER JONES
- 2 RAY CHARTER
- 3 BILLY WILSON
- 4 ALLAN HUNTER
- 5 DICK MULVANEY
- 6 KEN KNIGHTON
- 7 ALEX RUSSELL
- 8 FRED GOODWIN
- 9 BRYAN CONLON
- 10 EAMONN ROGERS
- 11 BRIAN HILL
- 12



Referee:

Mr. P. BALDWIN
(Middlesbrough)

Linesmen:

Red Flag—
Mr. R. A. Armstrong

Yellow Flag—
Mr. G. Earnshaw

JAMES BOARDMAN LIMITED

HIGHFIELD ROAD AND PATERSON STREET
ENGINEERING WORKS

*For new steam and water boilers and
boiler house maintenance*

Blackburn 59755 - 59756 (50623) Outside Office Hours.

LION



ALES

LION



ALES

LION



ALES



TYRES (DARWEN) LTD.

18/20 DUCKWORTH ST., DARWEN

WE STOCK ALL MAKES, AND ALL
SIZES OF NEW AND REMOULD TYRES
IMMEDIATE SERVICE : WHEEL BALANCING

Tel. 71553

Tel. 71863

DAY'S LINE-UP



Referee:

Mr. P. BALDWIN
(Middlesbrough)

Linesmen:

Red Flag—

Mr. R. A. Armstrong

Yellow Flag—

Mr. G. Earnshaw

SWINDON TOWN
(Red Shirts)

- 1 PETER DOWNSBOROUGH
- 2 ROD THOMAS
- 3 JOHN TROLLOPE
- 4 JOE BUTLER
- 5 FRANK BURROWS
- 6 STAN HARLAND
- 7 CHRIS JONES
- 8 TONY GOUGH
- 9 ARTHUR HORSEFIELD
- 10 PETER NOBLE
- 11 DON ROGERS
- 12

GOING AWAY

For the benefit of supporters wishing to follow the team to away fixtures, the Development Association, in conjunction with Ribblesdale Coaches Ltd., will be running trips to these matches. Bookings can be made at the Development Office, Nuttall Street, between the following hours:

SATURDAY

1-30 a.m. to 5-30 p.m.

MONDAY

9-30 a.m. to 7 p.m.

THURSDAY

9-30 a.m. to 7 p.m.

LION



ALES

ANELAYS

FOR

FIAT SALES & SERVICE

500 Sunroof Saloon ...	£490
850 Saloon	£648
128 Saloon	£818
124 Saloon	£925
125 Saloon	£1199

52-56 KING STREET,
BLACKBURN. Tel. 50446

ABOUT OUR VISITORS

PETER DOWNSBOROUGH (goal): Born at Halifax. Signed for Swindon Town from Halifax Town in August, 1965, and has been their first choice since. Fearless and agile goalkeeper who has done much to strengthen the Wiltshire club's defence.

ROD THOMAS (right-back): A former youth player with Swindon, though he started with Gloucester City. Welsh full and under-23 international and one of the most stylish and effective defenders in the game.

JOHN TROLLOPE (left-back): Born at Swindon, he joined Town from school and made his senior debut when he was only 16 in season 1960-61. Clinched his place there and then and has never looked back.

JOE BUTLER (right-half): Born at Newcastle-upon-Tyne, he joined Swindon from Newcastle United in August, 1965. First team regular since and a fast and tenacious player who makes up for his lack of inches by hard work.

FRANK BURROWS (centre-half): Born at Larkhall, Scotland, he had three seasons with Scunthorpe United before his transfer to Swindon. A strong and determined player who has been one of the key men in Swindon's recent successes.

STAN HARLAND (left-half): The club captain. A native of Liverpool, he was signed from Carlisle United in July, 1966. Previous clubs were Everton and Bradford City. A forceful player who likes to go up in support of his forwards.

CHRIS JONES (outside-right): Born at Altrincham. A hard-working player who signed for Swindon from Manchester City and gained a regular first-team spot last season.

TONY GOUGH (inside-right): A close season signing from Bath City. Formerly with Bristol Rovers.

ARTHUR HORSFIELD (centre-forward): Born at Newcastle and signed for Swindon from Newcastle United. Previously with Middlesbrough and a former Youth international.

PETER NOBLE (inside-left): Born at Sunderland, he joined Swindon from Newcastle United in January, 1968. Strong, attacking forward.

DON ROGERS (outside-left): Swindon's pride and joy. Signed for them when he was 15 and is the idol of the town. England youth and under-23 international and one of the most dangerous attackers in the game.

Kick-off with a "Goalden Goal"

BLACKBURN ROVERS
DEVELOPMENT ASSOCIATION No. 3

MATCH DAY DOUBLE
Subscription 6d.

Price

6^D

ROVERS v SWINDON
Saturday, 5th September, 1970

WITH
FREE HOLIDAY "71" DRAW

★ **GOALDEN £15 GOALS** ★

EVERY GOAL SCORED IS A WINNER
(Details inside)

TOP SCORING TREBLE £10
(List of Teams printed inside)

More than One Winner, prizes shared

FREE
JET CRUISE TO THE SUN — 1971

Price

6^D

Own a Colour T.V. without paying any deposit

How? T.R.S. run a special personal loan scheme which enables you to buy the very latest colour T.V. (and incidentally any other goods, i.e. grams, Black and White T.V. etc. and have it installed in your home with up to

TRS

3 years to repay. Who knows, next week you could be seeing Match of the Day in colour.

T.R.S. Branches at:

46/48 Higher Eanam
Penny St. Market
6a Higher Audley St.
tel: Blackburn 52777

MATCH BALL SPONSORS

We are very grateful to the following who have sponsored a match ball for season 1970-71.

Frank Birtwell, Builders, Whalley, Lancs.

David Hollen & Co, Estate Agents.

John Forbes (Outfitters) Ltd., Blackburn.

Bancroft Shuttles & Bobbins Ltd., Blackburn.

J. & J. A. Porter, Ltd., Greenbank Mill.

Golden Palms Ballroom, Blackburn.

Edgar Pickering (Blackburn) Ltd. (two footballs).

Tom Martin & Co. Ltd., National Metal Merchants, Blackburn.

Harry Peterson, Esq., Beardwood, Blackburn.

C. Walker & Sons Ltd., Britain's largest steel service centre, Blackburn.

C. and J. G. Potters of Darwen, The Wallpaper Manufacturers Ltd.

Blackburn Corrugated Paper Co. Ltd., Freme St. Works, Blackburn.

Arnold Halliwell, Turf Accountant, Blackburn.

Bill Bolton, Esq., Darwen, Lancs.

William Birtwistle Allied Mills Ltd., Blackburn.

Paygo Cash & Carry (Fred Astley Ltd.), Stancliffe Street, Blackburn.

Feniger & Blackburn Ltd., Parkside Mill.

Shopfitters (Lancashire) Ltd., Rhyddings Works, Oswaldtwistle.

FOR EVERYTHING CONCERNING CARAVANS

YOU MUST SEE

ALAN CLARKE

(Caravans) LTD.

Renowned for

SALES—SERVICE—SITES

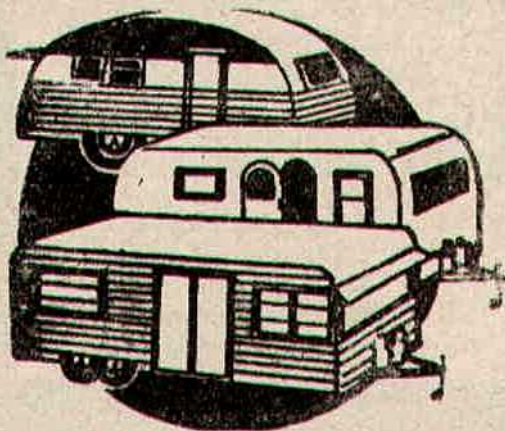
including our own private site at

LOCH RYAN—STRANRAER

.. Your inquiries welcome at ..

The Boatyard, Whitebirk,

Blackburn—Telephone: 54222



NEXT HOME MATCHES

SATURDAY, SEPTEMBER 12th.

Kick-off 3 p.m.

CENTRAL LEAGUE

Rovers Res. v. West Brom Res.

SATURDAY, SEPTEMBER 19th.

Kick-off 3 p.m.

LEAGUE DIVISION TWO

Rovers v. Bolton Wanderers

SEASON TICKETS 1970/71

Prices for the coming season are as follows:—

GROUND (Juvenile, under 15)	£2.10.0
GROUND (Adult)	£4. 4.0
ENCLOSURE	£5.10.0
RIVERSIDE STAND RESERVED SEAT	£7. 0.0
*RIVERSIDE STAND, DOUBLE RESERVED SEAT ...	£10.10.0
NUTTALL STREET STAND RESERVED SEAT	£10. 0.0
NUTTALL STREET STAND (DARWEN END) OLD AGE PENSIONERS UNRESERVED SEAT	£4 0.0
*NUTTALL STREET STAND DOUBLE TICKET	£14. 0.0
PRIVATE BOX "A" TICKET	£12.10.0

* These Tickets consist of Double Tickets for two Reserved Seats in either the Riverside Stand or Nuttall Street Stand for **Adult and Juvenile**.

Old Age Pensioners are reminded that Pension Books must be produced when purchasing Season Tickets for Block "C" and when gaining admission on match days.

SEASON TICKETS ARE NOW ON SALE from the Ticket Office, Ewood Park, between the hours of 9-30 a.m. and 12 noon and 2-00 p.m. to 4-30 p.m. on Weekdays and 9-30 a.m. to 12 noon on Saturdays. **ALSO** on Thursday and Friday evenings, the 20th and 21st of August, between 6-00 p.m. and 8-00 p.m.

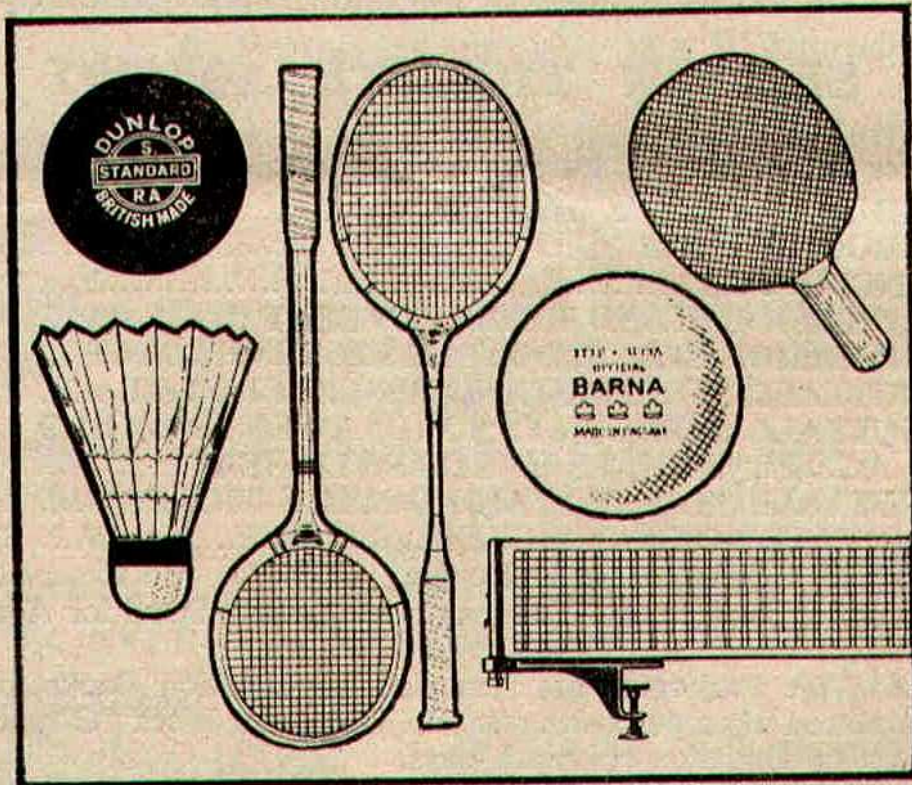
Ground and Enclosure Tickets can be obtained from John Forbes Ltd., Northgate, Blackburn, during normal shop hours.

Reserved Seat Ticket Holders are reminded that their seat should be

YOU'LL FIND
DUNLOP
WHERE THE
WINNERS ARE...

...AND AT
JOHN FORBES
(OUTFITTERS) LTD.

ATHLETIC HOUSE
LORD STREET, NORTHGATE BLACKBURN



Whatever your favourite winter sport—squash, badminton or table tennis—you're on a winner with Dunlop equipment. Go see the complete Dunlop range soon.

You'll do better with

Dunlop

ROVERS SOUVENIR SHOP

Order Form

BLACKBURN ROVERS F.C., EWOOD PARK, BLACKBURN, BB2 4JF

The Souvenir Shop will be open for personal shoppers on match days between 1-30 p.m. and 5-30 p.m. on Saturdays and 6-0 p.m. to 9-30 p.m. for evening matches.

ITEM	Price each	If by post please add p. and p.	Quantity required
ROVERS AIR LINE BAG	22/6	2/6	
BLAZER BADGES WOVEN	6/-	6d	
BLUE and WHITE BOB HATS	9/-	6d	
ROVERS CUFF LINKS	18/6 pr.	6d	
ROVERS DUFFLE BAG	16/-	2/6	
MINIATURE FOOTBALL BOOTS	8/6	9d	
ROVERS KEY RING	4/-	6d	
ROVERS CLUB LAPEL BADGE	5/-	6d	
ROVERS NIGHTDRESS CASE	40/-	2/6	
ROVERS PENNANTS	3/6	6d	
ROVERS FELT TIPPED PEN	1/3	6d per ord	
ROVERS BLUE and WHITE BALL PEN	1/-	6d per ord	
ROVERS BALL PEN	6d	6d per ord	
ROVERS GROUP PHOTOGRAPH (Half plate)	3/-	6d	
ROVERS PROGRAMME BINDER	7/6	1/-	
BLUE and WHITE ROSETTE	2/6	6d	
BLUE and WHITE SCARF	14/6	1/-	
UNIVERSITY STYLE CLUB SCARF	19/-	1/-	
BLUE and WHITE SNAKES	27/6	2/6	
ROVERS TEDDY BEAR (14 in.)	22/6	3/-	
ROVERS TEDDY BEAR (24 in.)	37/6	5/-	
ROVERS TIE	15/-	6d	
ROVERS TIE TACKS	8/6	6d	
ROVERS ADHESIVE ANORAK BADGE	2/-	6d.	
ROVERS CAR WINDOW STICKER	2/-	6d	
AUTOGRAPH SHEETS	6d.	—	
ROVERS SMALL PENNANTS	2/6	6d	
ROVERS WALLET WITH FOUR PENS	2/-	1/-	
ROVERS ASSORTED PROGRAMMES (4 for)	1/-	6d	
ROVERS ENAMELLED CAR BADGE	22/6	1/-	
STYLO MATCH-MAKER BALL	20/-	2/6	
ASSORTED PENNANTS, LARGE	5/- (each)	6d	
WORLD CUP BROCHURE (special offer)	4/- (each)	1/-	
ROVERS BLUE & WHITE CAPS	4/-	1/-	

Complete and post this order form to the above address.
I enclose Cheque/Postal Order/Money Order payable to Blackburn
Rovers F.C. for £ : :

Name

Address

(Block letters please)

FIRST TEAM FIXTURES

1970

Aug.	15—Watford	A1—2
"	19—League Cup (1)	
"	22—Orient	H0—0
"	29—Sheffield Wed.	A1—1
Sept.	2—Queens Park R.	H0—2
"	7—Swindon Town	H
"	9—League Cup (2)	
"	12—Middlesbrough	A
"	19—Bolton Wanderers . H	
"	21—Oxford United	H
"	26—Bristol City	A
Oct.	3—Leicester City	H
"	7—League Cup (3)	
"	10—Millwall	A
"	17—Watford	H
"	20—Luton Town	A
"	24—Norwich City	H
"	28—League Cup (4)	
"	31—Portsmouth	A
Nov.	7—Sheffield United ... A	
"	14—Cardiff City	A
"	18—League Cup (5)	
"	21—Carlisle United (1) A	
"	28—Sunderland	H
Dec.	5—Charlton Athletic ... A	
"	9—League Cup (SF)	
"	12—Hull City	H

Dec.	16—League Cup (SF)	
"	19—Orient	A
"	26—Birmingham City ... H	

1971

Jan.	2—F.A. Cup 3	
"	9—Oxford United	A
"	16—Luton Town	H
"	23—F.A. Cup 4	
"	30—Sunderland	A
Feb.	6—Charlton Athletic ... H	
"	13—Hull City (5)	A
"	20—Carlisle United	H
"	27—Portsmouth (LCF) H	
Mar.	6—Norwich City (6) ... A	
"	13—Cardiff City	H
"	20—Sheffield United ... A	
"	27—Swindon Town (SF) A	
Apr.	3—Sheffield Wed. H	
"	9—Middlesbrough	H
"	10—Birmingham City ... A	
"	12—	
"	13—Leicester City	A
"	17—Millwall	H
"	24—Bolton Wanderers A	
"	27—Queens Park R. ... A	
May.	1—Bristol City	H
"	8—F.A. Cup Final	

RESERVE TEAM FIXTURES

1970

Aug.	15—Nottingham Forrest	H1—2
"	19—Manchester City ...	A1—2
"	22—Bolton Wanderers	A4—2
"	26—Liverpool	H0—4
"	29—Sheffield Wed.	H3—0
"	31—Blackpool	A1—0
Sept.	5—Huddersfield Town A	
"	12—West Brom A.	H
"	19—Stoke City	A
"	26—Newcastle United ... H	
Oct.	3—Everton	A
"	10—Manchester United H	
"	17—Nottingham Forest A	
"	24—Burnley	A
"	31—Bury	H
Nov.	7—Leeds United	A
"	14—Sheffield United ... H	
"	21—Coventry City	H
"	28—Wolverhampton W. A	
Dec.	5—Aston Villa	H
"	12—Derby County	A
"	19—Bolton Wanderers H	

Dec.	26—Preston North End A
------	------------------------

1971

Jan.	9—Manchester City ... H	
"	16—Liverpool	A
"	30—Wolverhampton W. H	
Feb.	6—Aston Villa	A
"	13—Derby County	H
"	20—Coventry City	A
"	27—Bury	A
Mar.	6—Burnley	A
"	13—Sheffield United ... A	
"	20—Leeds United	H
"	27—Huddersfield Town H	
Apr.	3—Sheffield Wed. A	
"	9—	
"	10—Preston North End H	
"	13—West Brom A. A	
"	17—Manchester United A	
"	20—Everton	H
"	23—Stoke City	H
"	28—Blackpool	H
May.	1—Newcastle United A	

BAD BREAK FOR DON



IT was bitter news for the fans to read that Don Martin, our popular centre-forward, a big favourite with the crowd, had broken his left ankle in the game against Sheffield Wednesday. The extent of the injury was revealed by an X-ray. Don is at his home at Feniscowles with his leg in plaster to the thigh and faces a long absence from the game. Pictured lending his dad a helping hand with a crutch is three-year-old Andrew Martin.

LEAGUE TABLES

LEAGUE SECOND DIVISION

(Table up-to and including

August 29th, 1970)

	P	W	D	L	F	A	Pts
Birmingham	3	2	1	0	6	2	5
Oxford U.	3	2	1	0	5	2	5
Hull City	3	2	1	0	4	2	5
Bristol City	3	2	1	0	6	4	5
Cardiff City	4	2	1	1	5	4	5
Bolton W.	4	2	1	1	8	9	5
Portsmouth	3	1	2	0	5	1	4
Leyton O.	3	1	2	0	3	1	4
Norwich City	3	1	2	0	2	1	4
Sheffield W.	5	1	2	2	5	6	4
Swindon	3	1	1	1	4	3	3
Leicester C.	3	1	1	1	5	4	3
Watford	3	1	1	1	6	6	3
Charlton	3	0	2	1	1	2	2
Blackburn R.	3	0	2	1	2	3	2
Millwall	3	0	2	1	3	4	2
Middlesbrough	3	1	0	2	2	4	2
Sheffield U.	3	1	0	2	3	5	2
Luton Town	3	0	2	1	3	5	2
Sunderland	3	0	1	2	6	9	1
QPR	3	0	1	2	4	7	1
Carlisle U.	3	0	1	2	3	7	1

CENTRAL LEAGUE

(Table up-to and including

August 29th, 1970)

	P	W	D	L	F	A	Pts
Sheffield U.	5	4	1	0	14	4	9
Liverpool	5	4	0	1	14	5	8
Blackpool	5	3	2	0	7	3	8
Manchester C.	5	3	1	1	13	9	7
Coventry C.	5	1	4	0	10	3	6
Newcastle U.	5	2	2	1	5	4	6
West Brom.	5	2	2	1	5	5	6
Preston N.E.	5	3	0	2	7	12	6
Bury	4	2	1	1	8	5	5
Everton	5	2	1	2	8	7	5
Bolton Wand.	5	2	1	2	11	11	5
Derby County	5	1	3	1	4	4	5
Nott. F.	5	1	3	1	4	4	5
Leeds Utd.	3	1	2	0	3	2	4
Wolves	5	1	2	2	7	7	4
Rovers	5	2	0	3	9	10	4
Man. Utd.	5	1	1	3	7	8	3
Stoke City	5	1	1	3	5	8	3
Burnley	4	1	1	2	6	11	3
Aston Villa	5	0	3	2	4	9	3
Huddersfield T.	5	0	1	4	2	14	1
Sheffield W.	5	0	0	5	5	13	0

Hospitals Broadcast

HAVE you a relative or friend in hospital locally? If so, cheer them up by requesting their favourite gramophone record. Phone **BLACKBURN 54673** between 8 p.m. and 9-30 p.m., except Saturday.

LUCKY NUMBER

No 2306

The holder of the winning programme should present same at the ticket office, where it can be exchanged for two complimentary centre stand tickets for the next home League match.

RIBBLESDALE--BATTY-HOLT

— FOR —

Tours ★ Private Hire ★ Excursions ★ Services ★ Theatres
World Wide Travel Service ★ Road ★ Rails ★ Air ★ Marine

TOURS FOR 1970:

14 days—ROME, BAY OF NAPLES, AUSTRIA and SWITZERLAND

14 days—AUSTRIAN and ITALIAN LAKES DOLOMITES and VENICE

14 days—SWISS LAKES, LUGANO and MONTREUX

9 days—EMERALD ISLE, KILLARNEY & GALWAY

5-7-9-12 days—to SCOTLAND

7 & 9 days—Centre Tours to BOURNEMOUTH, TORQUAY, GREAT YARMOUTH, NEWQUAY, and PORTHCAWL

PRIVATE HIRE—29, 41, 45, 49, 52 Seater Coaches Available.

EXCURSIONS—Variety of day and half day outings to coastal and inland places of interest

SERVICES—NORTH WALES: Prestatyn, Rhyl, Abergele, Colwyn Bay, Llandudno, Pwllheli, etc. and to SOUTH, SOUTH WESTS and CORNWALL POINTS

THEATRES—Manchester, Blackpool and Morecambe

TRAVEL SERVICES—for all your requirements—contact:
PRESTON NEW ROAD OFFICE

BE ASSURED OF OUR EXPERT ADVICE

HEAD OFFICE: George Street West, Blackburn. Telephone: 57311

11 Railway Road, Blackburn, Telephone: 57374

New Chapel Street, Mill Hill, Blackburn. Telephone: 27371

1 Preston New Road, Blackburn. Telephone: 57311

64 Abbey Street, Accrington. Telephone: 32478

SEE ROVERS FOR FOOTBALL

SEE

CAXTON FOR PRINTING

STATIONERY and RUBBER STAMPS

7a and 9 PARK ROAD

and 1 LOWER AUDLEY STREET

CAXTON WORKS (BLACKBURN) LTD.
52147

a **TEAM** for your selection . . .

BULLS HEAD

WILPSHIRE

A La Carte Menu
Grills our speciality
Under personal supervision
of

H. Dickinson

Tel. Blackburn 48274.

Red Lion

Roman Road, Blacksnape, Darwen

● **LUNCHEONS**

Tuesday to Friday inclusive

● **HIGH CLASS SNACKS**

every evening except Monday

Telephone 71131

The De Tabley Arms

Ribchester

Licensed Restaurant and
dinner dances

Full a la carte menu

Steak Diane a speciality

For reservations ring
Ribchester 308

YE HORNS INN

GOOSNARGH

(Prop. R. Woods)

Tel. Goosnargh 230

Lunches and Dinners Daily
except Monday.

WITTON BANK HOTEL

SPRING LANE, BLACKBURN

Residential

Weddings and Private Parties

Tel. Blackburn 61598.

Aspinall Arms

Mitton, Nr. Whalley

For the discerning diner

Full Menu and Snacks

Tel. Stonyhurst 223

For the best of English cookery
visit

DOG & PARTRIDGE

Chipping

Prop. J. W. A. Barr

For table reservation

telephone Chipping 201

FIVE BARRED GATE HOTEL

Tel. Samlesbury 600

A la Carte,

Dinners & Luncheons

Hot & Cold Snacks at the bar.

a **MATCH** for any appetite . . .